



shunt release 90-110 V AC, 50/60 Hz, 100% OP 70-190 V AC, 50/60 Hz, 5 s
switch-on duration 70-190 V DC, 5 s switch-on duration with screw terminal for
3RV2 motor starter protector/circuit breaker

| | |
|--|--|
| product brand name | SIRIUS |
| product category | Auxiliary release |
| product designation | shunt release |
| product type designation | 3RV29 |
| suitability for use | motor circuit breaker |
| General technical data | |
| certificate of suitability | CE / UL / CSA |
| size of the circuit-breaker | S00, S0, S2, S3 |
| closing power at DC minimum | 13 W |
| insulation voltage | |
| • rated value | 690 V |
| • with degree of pollution 3 at AC rated value | 690 V |
| degree of pollution | 3 |
| protection class IP on the front according to IEC 60529 | IP20 |
| break time maximum | 20 ms |
| reference code according to DIN 40719 extended according to IEC 204-2 according to IEC 750 | F |
| reference code according to EN 61346-2 | F |
| Substance Prohibitance (Date) | 05/01/2012 |
| Net Weight | 130 g |
| type of voltage of the control supply voltage | AC |
| control supply voltage 1 at AC | |
| • at 50 Hz | 90 ... 110 V |
| • at 60 Hz | 90 ... 110 V |
| control supply voltage frequency 1 | 50 ... 60 Hz |
| number of NC contacts for auxiliary contacts instantaneous contact | 0 |
| number of NO contacts for auxiliary contacts | |
| • instantaneous contact | 0 |
| • leading contact | 0 |
| number of CO contacts of auxiliary contacts instantaneous contact | 0 |
| Ambient conditions | |
| ambient temperature | |
| • during operation | -20 ... +60 °C |
| • during storage | -50 ... +80 °C |
| Electrical Safety | |
| protection class IP on the front according to IEC 60529 | IP20 |
| touch protection on the front according to IEC 60529 | finger-safe, for vertical contact from the front |
| Short-circuit protection | |

| | |
|---|------------------|
| design of short-circuit protection | fuse |
| Installation/ mounting/ dimensions | |
| fastening method | snap-on mounting |
| height | 90 mm |
| width | 19 mm |
| depth | 68 mm |

| | |
|---|----------------------|
| Connections/ Terminals | |
| type of electrical connection for auxiliary and control circuit | screw-type terminals |

Approvals Certificates

| | | |
|--------------------------|-------------------|----------------------|
| General Product Approval | Test Certificates | Maritime application |
|--------------------------|-------------------|----------------------|



EG-Konf.



UL


[Special Test Certificate](#)
[Type Test Certificates/Test Report](#)


ABS

| | |
|----------------------|-------|
| Maritime application | other |
|----------------------|-------|



LRS



PRS



RINA

[Miscellaneous](#)

| | | |
|-------|---------|-------------|
| other | Railway | Environment |
|-------|---------|-------------|


[Confirmation](#)


VDE

[Special Test Certificate](#)
[Environmental Confirmations](#)

Further information

Information on the packaging

<https://support.industry.siemens.com/cs/ww/en/view/109813875>

Information for data generation and storage

<https://support.industry.siemens.com/cs/ww/en/view/109995012>

Information- and Downloadcenter (Catalogs, Brochures,...)

<https://www.siemens.com/ic10>

Industry Mall (Online ordering system)

<https://mall.industry.siemens.com/mall/en/en/Catalog/product?mlfb=3RV2902-1DF0>

Cax online generator

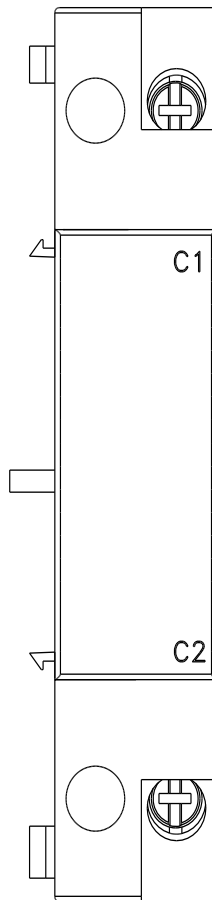
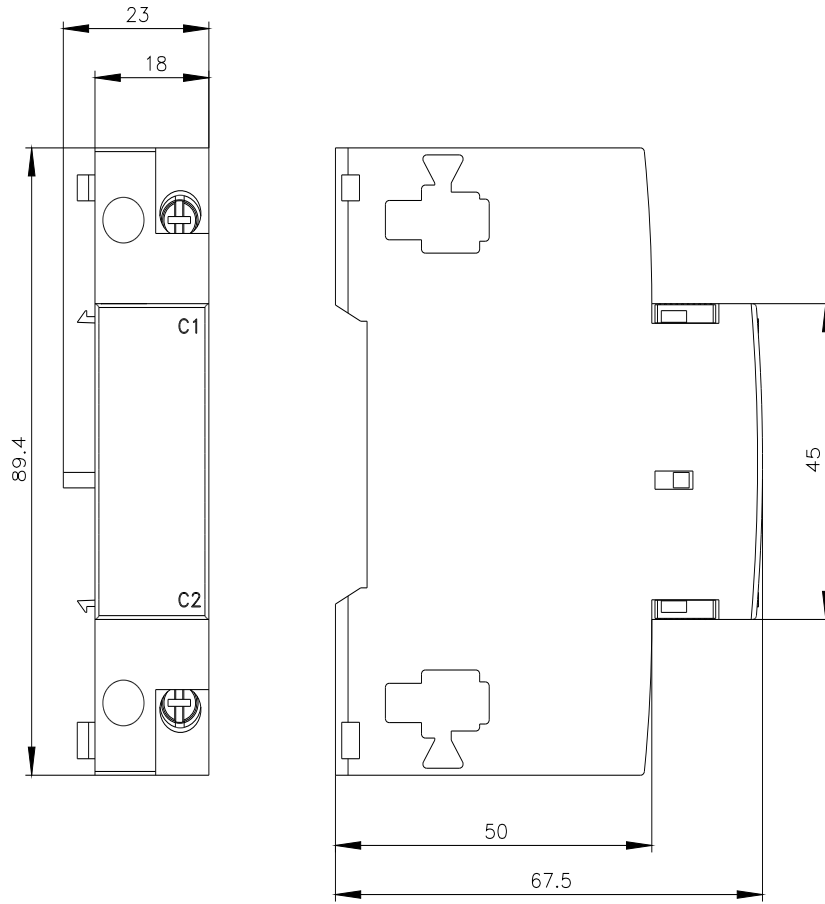
<https://support.automation.siemens.com/WW/CAXorder/default.aspx?lang=en&mlfb=3RV2902-1DF0>

Service&Support (Manuals, Certificates, Characteristics, FAQs,...)

<https://support.industry.siemens.com/cs/ww/en/ps/3RV2902-1DF0>

Image database (product images, 2D dimension drawings, 3D models, device circuit diagrams, EPLAN macros, ...)

https://www.automation.siemens.com/bilddb/cax_de.aspx?mlfb=3RV2902-1DF0&lang=en





last modified:

4/2/2025 

TURLL

YOUR GLOBAL AUTOMATION PARTNER

3RV2902-1DF0

OFFICIAL DATASHEET & QUOTATION

- 100% New & Original Factory Sealed
- Global Express Shipping (DHL/FedEx/UPS)
- 12-Month Warranty Protection
- Professional Technical Support

[CHECK STOCK & PRICE](#)



Need Assistance? Scan to Chat on WhatsApp

sales@turl.com | +852 6339 7344